

TICKETez
eiBox Office
Sage 100 Advanced ERP
Integration
Adapter Documentation
Version 1.0
Millennium Accounting Solutions
Program Guide

Copy Rights
© 2014 Millennium Accounting Solutions
6070 Hellyer Ave
San Jose, CA 95138
Phone 408-370-0656 • Fax 408-778-4931
www.mas-llc.com

Table of Contents

Introduction.....	3
Sage 100 Advanced ERP Adapter (how it works).....	4
Sage 100 Advanced ERP/eiBox Office system requirements.....	5
Data source name - eiBox Office.....	6
Adapter Process Flow	7
Hardware/Software Configuration.....	11

Introduction

This custom program includes an adapter that synchronizes the eiBox Office suppliers, customers, events, purchases and sales and their related transactions with the Sage 100 Advanced ERP suppliers, customers, inventory, purchases and sales.

eiBox Office Sage 100 Advanced ERP Custom Adapter (how it works)

Purchase Orders

The integration adapter produces the data source files for any newly added and/or changed suppliers, events, and purchase orders in eiBox Office. These files are imported to the Sage 100 Advanced ERP system in order to synchronize the eiBox Office data tables with the Sage 100 Advanced ERP system.

In addition, the adapter updates the purchase order receipts, inventory, supplier, and general ledger data files.

Finally, the adapter generates and emails the transaction log files to the end user including the detailed activities for each transaction. All of these tasks take place seamlessly without user(s) intervention.

Sales Orders

The integration adapter produces the data source files for any newly added and/or changed customers/ship to as well as any newly added /canceled customer invoices. In addition, all credit card payments are included in the data sources. These files are imported to the Sage 100 Advanced ERP system in order to synchronize the eiBox Office data tables with the Sage 100 Advanced ERP system.

In addition, the adapter updates the sales order history, inventory, customer sales history, invoice history, and general ledger data files.

Similar to the purchase order process, the adapter generates and emails the transaction log files to the end user including the detailed activities for each transaction.

Sage 100 Advanced ERP Requirements

All versions of Sage 100 ERP are supported. (2013 and up) There are no modifications to the Sage 100 ERP program source code.

MS SQL Server Standard version 2008 and above are supported

This program can be installed on any of the following operating system versions:

- MS Windows 2008 Server with Service Pack2
- MS Windows 2012 Server

eiBox Office Requirements

The eiBox Office system requirements are provided in the eiBox Office system documentation.

Data source names - eiBox Office

The eiBox Office data sources include:

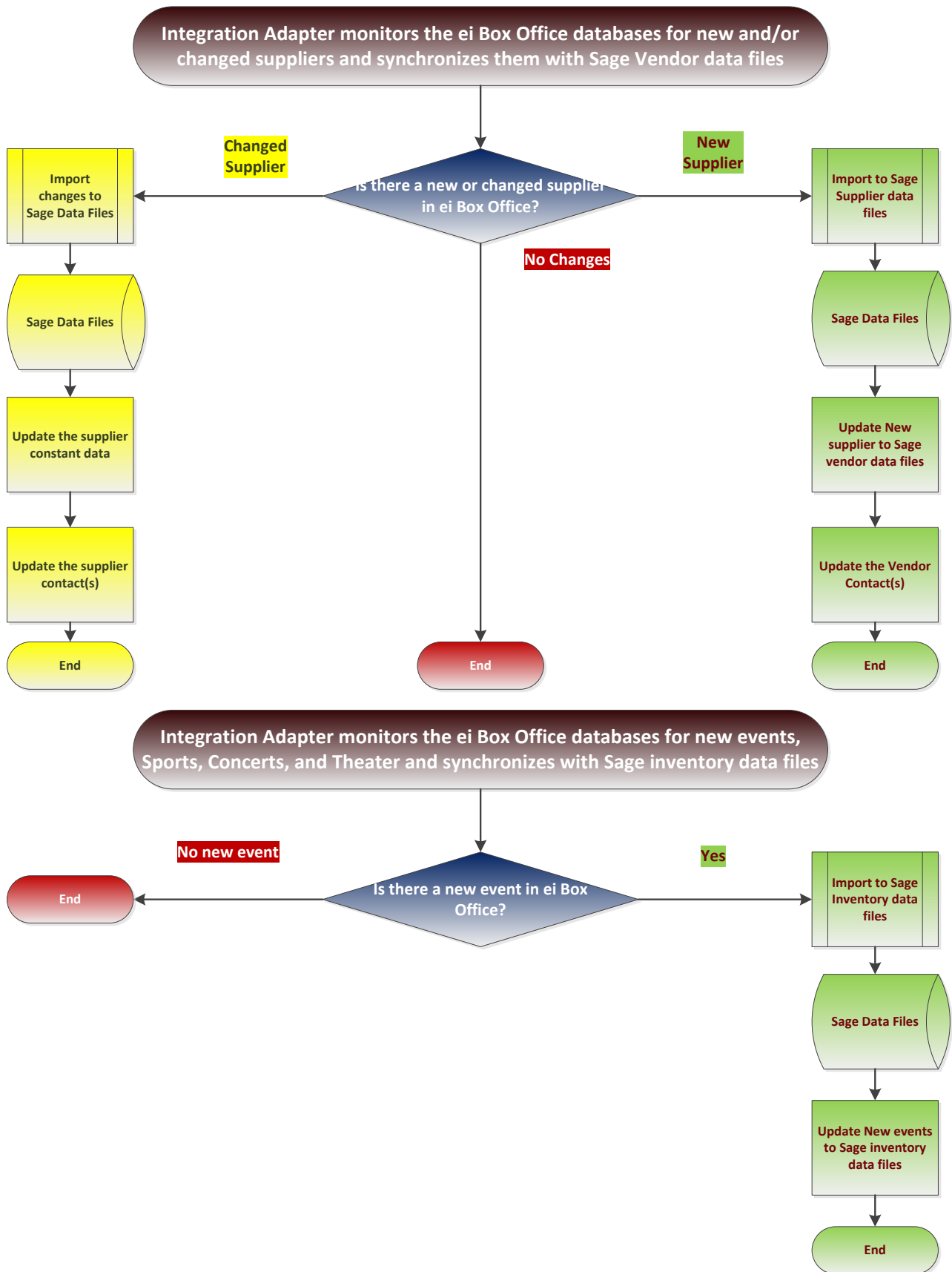
Database Name: EIBO

Table Names: BuyOrder.dbo, Client.dbo, Event.dbo, OrderPayment.dbo, SellOrder.dbo, tv_Accounting_PaymentOrder.dbo, tv_Client.dbo, tv_Orders_BuyOrder.dbo, tv_Orders_SellOrder.dbo, tv_Payments_PaymentTransaction.dbo, tv_Tickets_TicketGroup.dbo, and tv_Venue.dbo

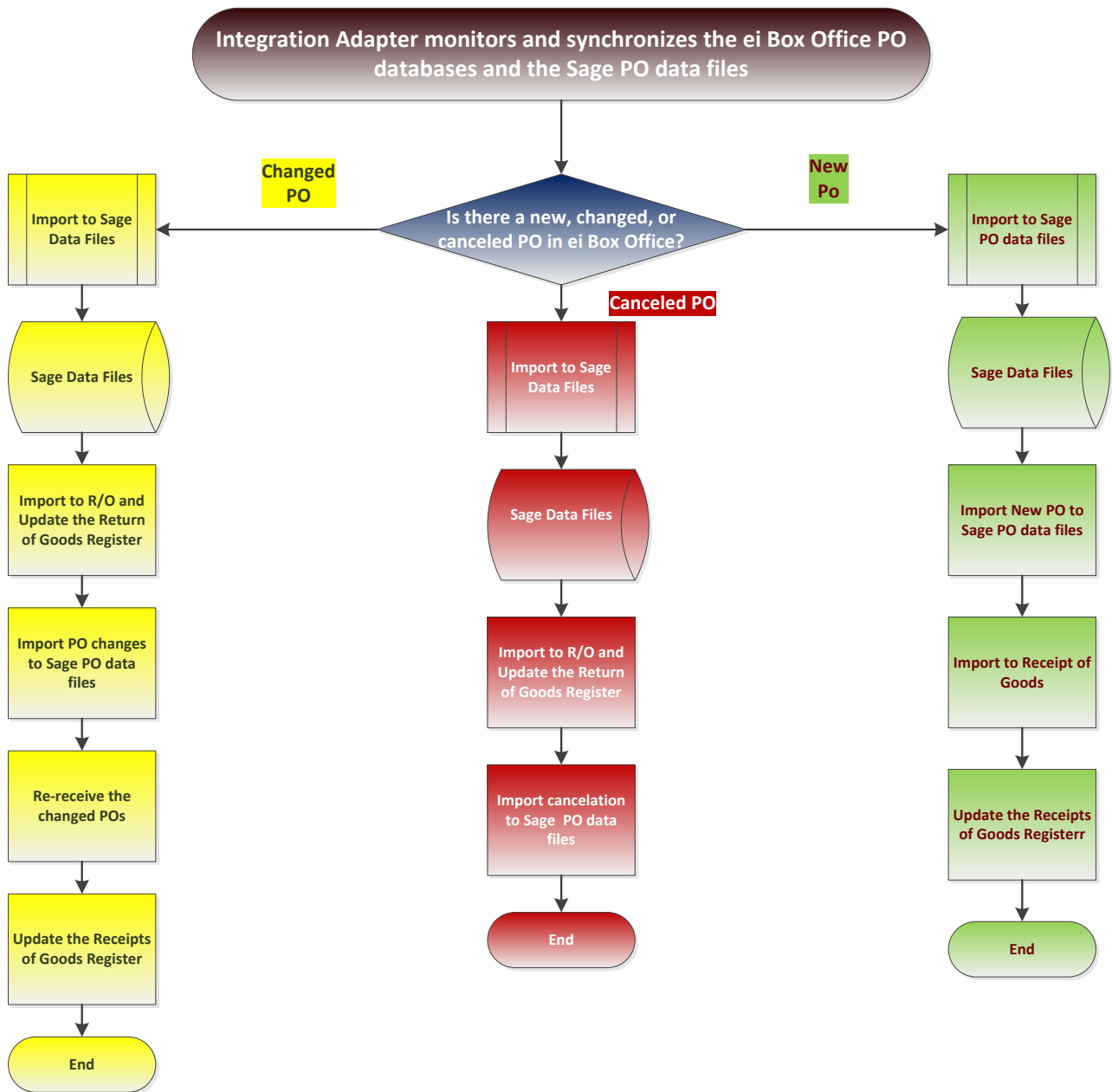
The eiBox Office Sage 100 Advanced ERP Integration Adapter queries/compares the data tables in eiBox Office and Sage 100 Advanced ERP and generates comma separated value (CSV) files to be imported to the Sage 100 Advanced ERP system. The Visual Integrator (VI) automated jobs process the data sources and populates the Sage 100 ERP Data Entry tables. The transactions in the Sage 100 ERP Data Entry files are updated and the VI transaction log files are emailed to the end user.

The process for the above steps is orchestrated by a series of MS SQL Agent jobs

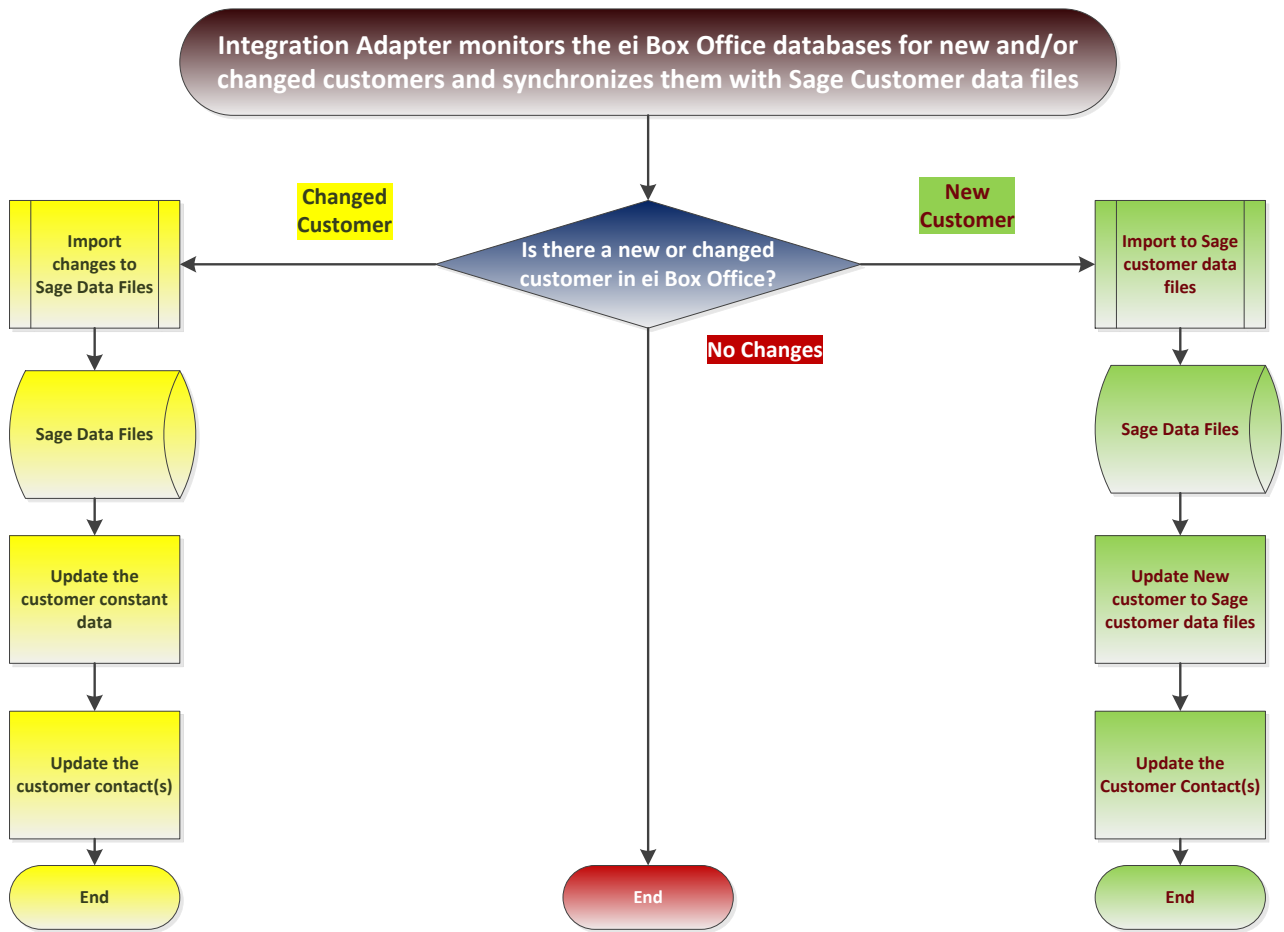
New supplier and event process flows:



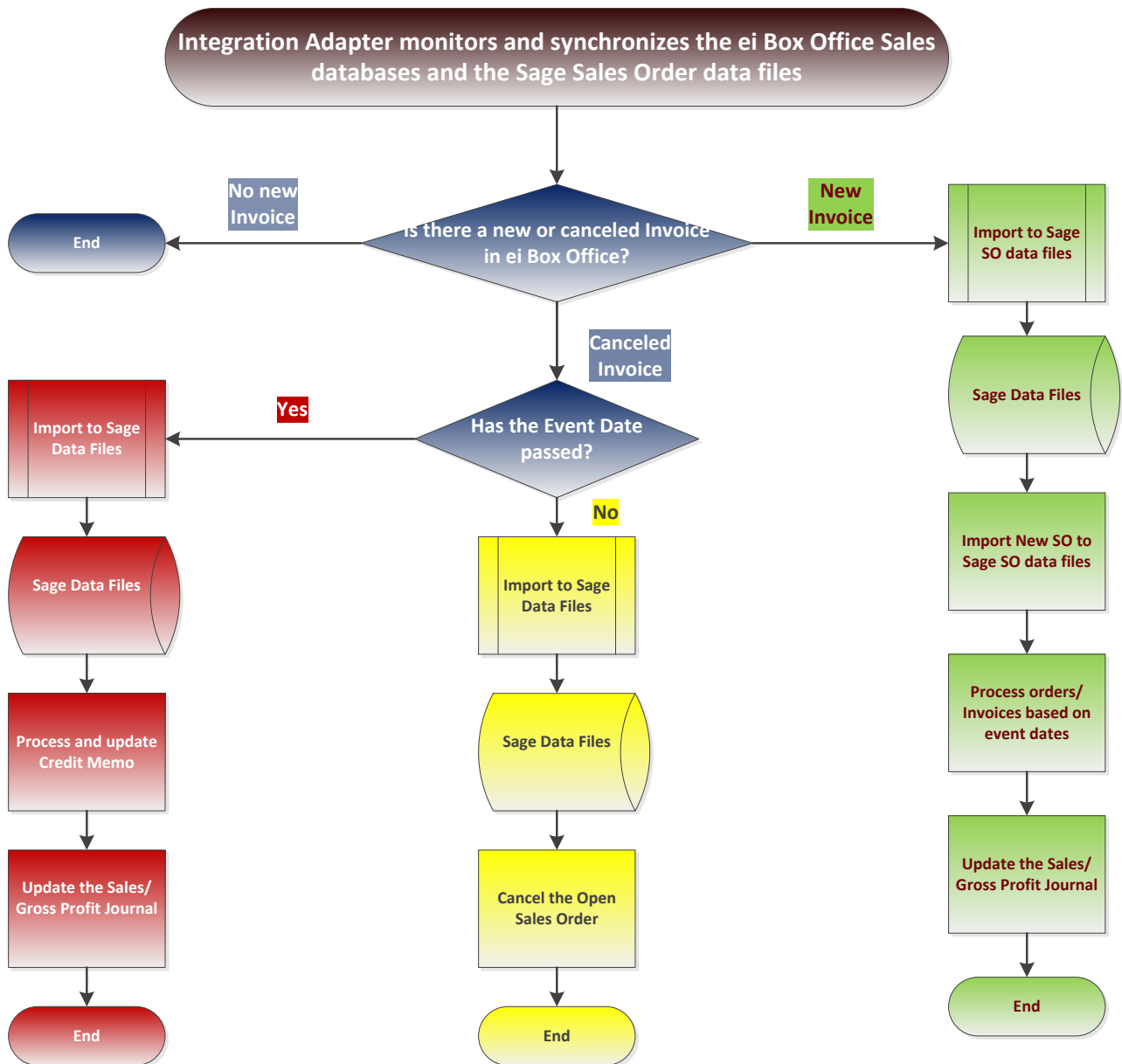
Purchase Order process flow:



Customer process flow:



Customer invoice process flow:



Hardware/Software configuration

